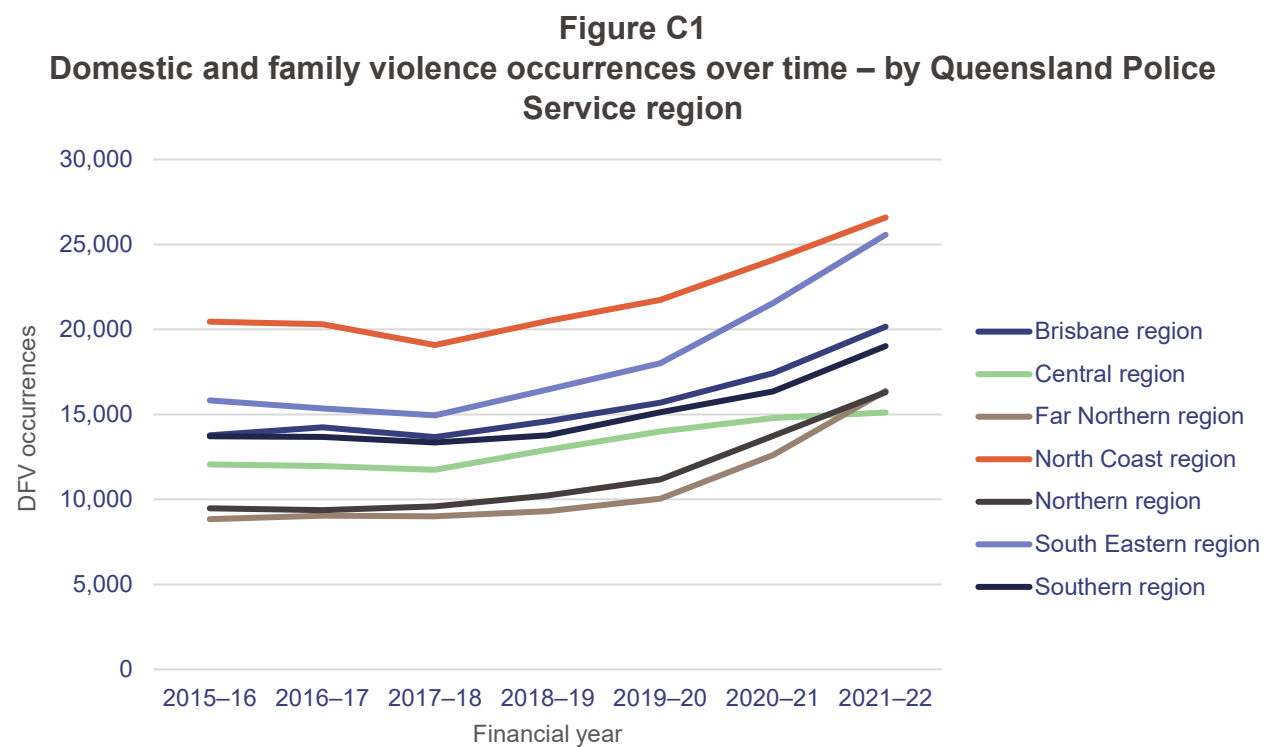


# C. Queensland Police Service regional breakdown

We carried out additional analysis on Queensland Police Service QPRIME and Queensland Police computer-aided dispatch (QCAD) data.

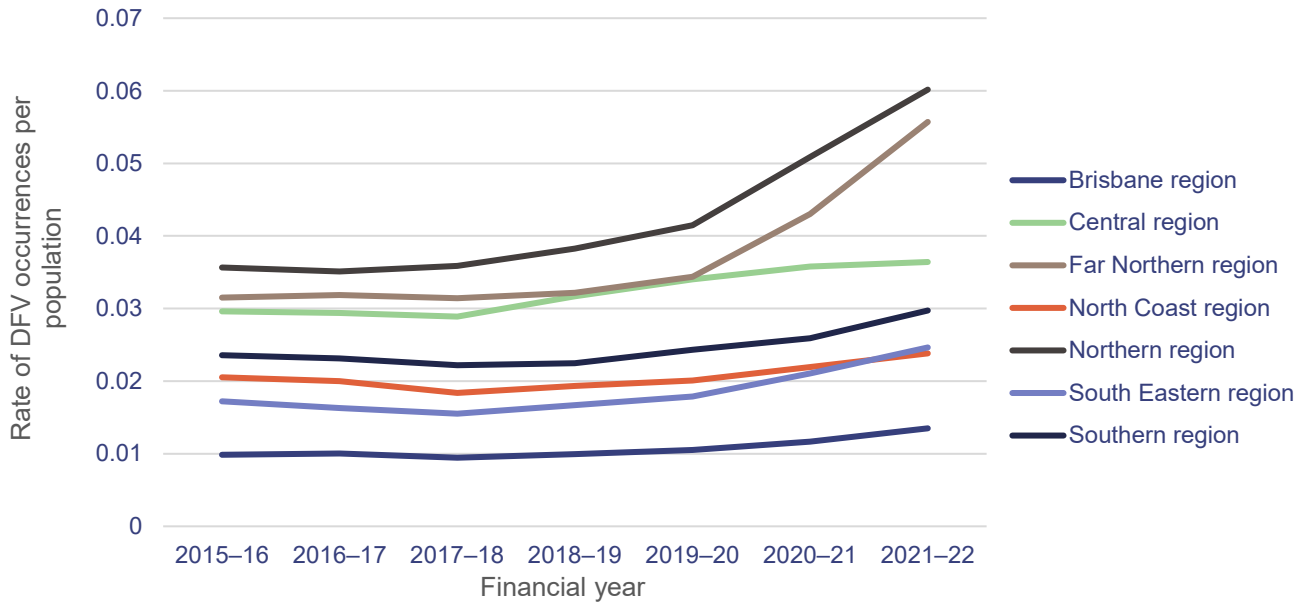
We conducted a breakdown by region to provide additional insights on DFV occurrences; unfounded, withdrawn or cancelled domestic violence order (DVO) breaches; percentage of applications conducted via police; and median response times for 000 Code 1 (very urgent), Code 2 (urgent), and Code 3 (direct response required) calls for service.



Source: Queensland Audit Office using QPRIME data provided by the Queensland Police Service.

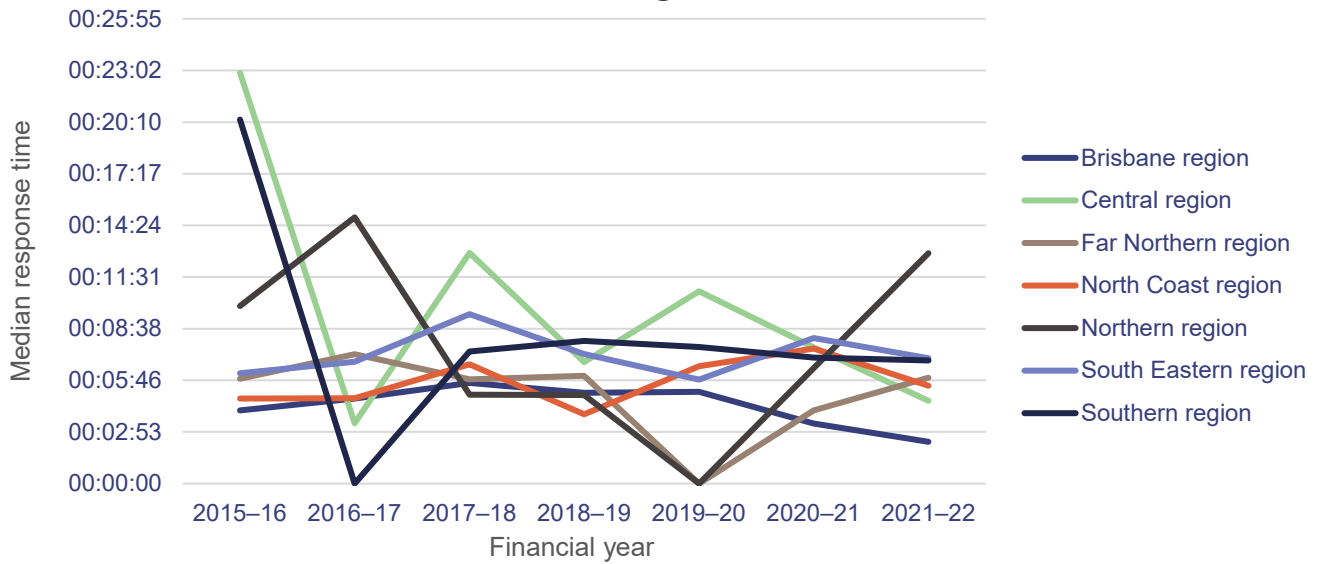


**Figure C2**  
**Domestic and family violence occurrences over time by population – by Queensland Police Service region**



Source: Queensland Audit Office using QCAD data provided by the Queensland Police Service.

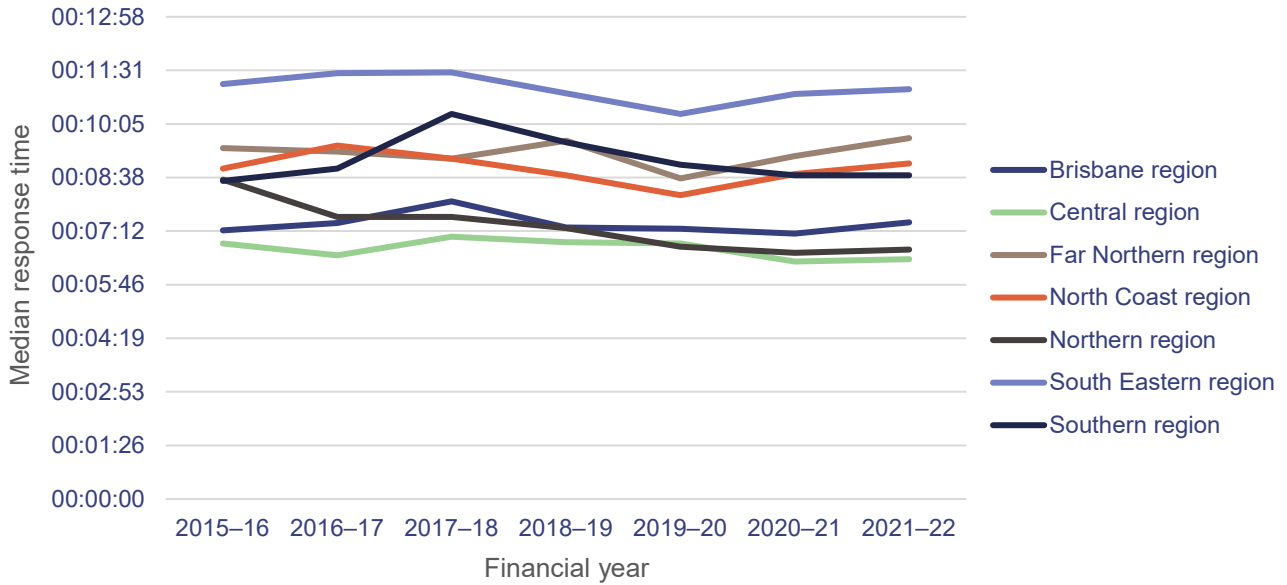
**Figure C3**  
**Median response times to Code 1 calls for service – by Queensland Police Service region**



Source: Queensland Audit Office using QCAD data provided by the Queensland Police Service.

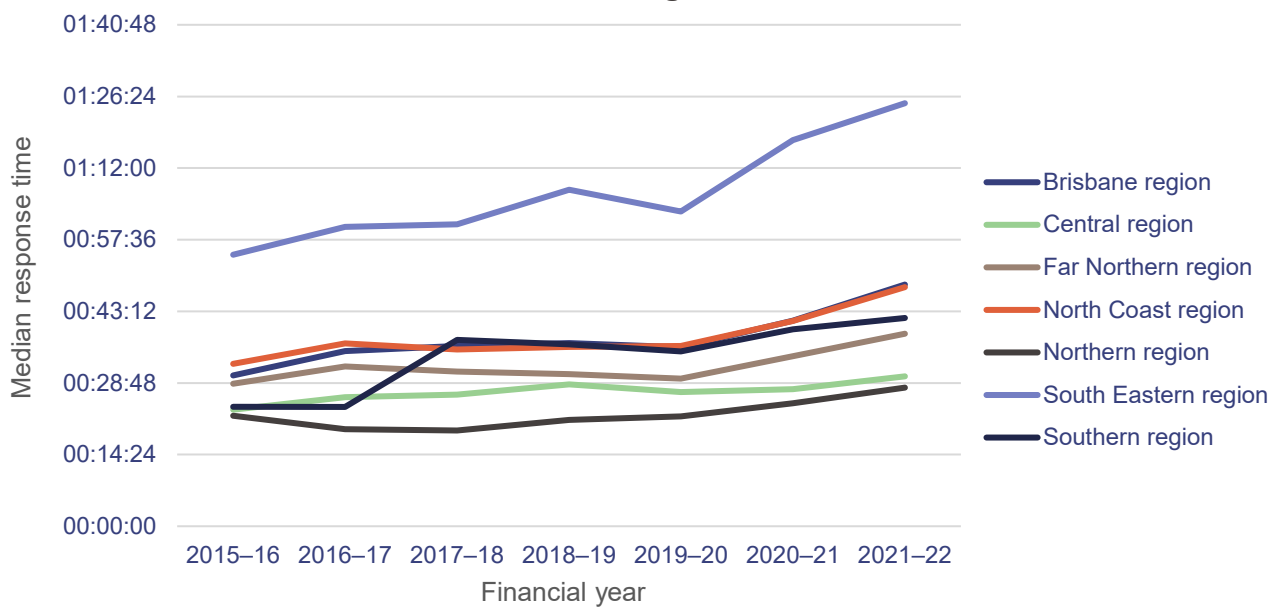


**Figure C4**  
**Median response times to Code 2 calls for service – by Queensland Police Service region**



Source: Queensland Audit Office using QCAD data provided by the Queensland Police Service.

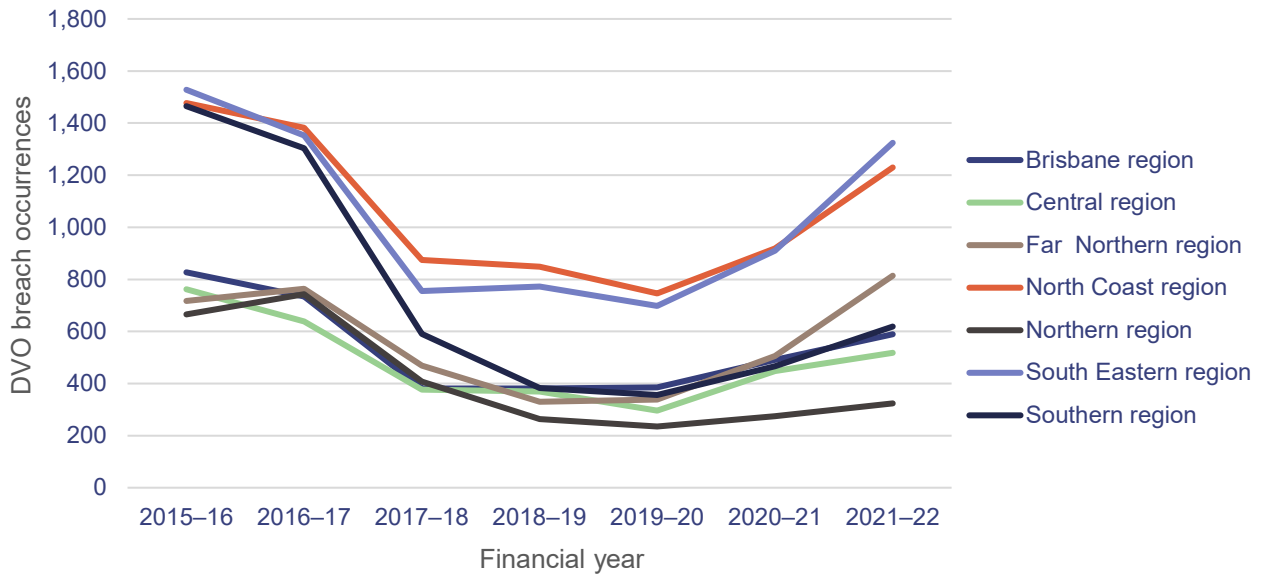
**Figure C5**  
**Median response times to Code 3 calls for service – by Queensland Police Service region**



Source: Queensland Audit Office using QCAD data provided by the Queensland Police Service.

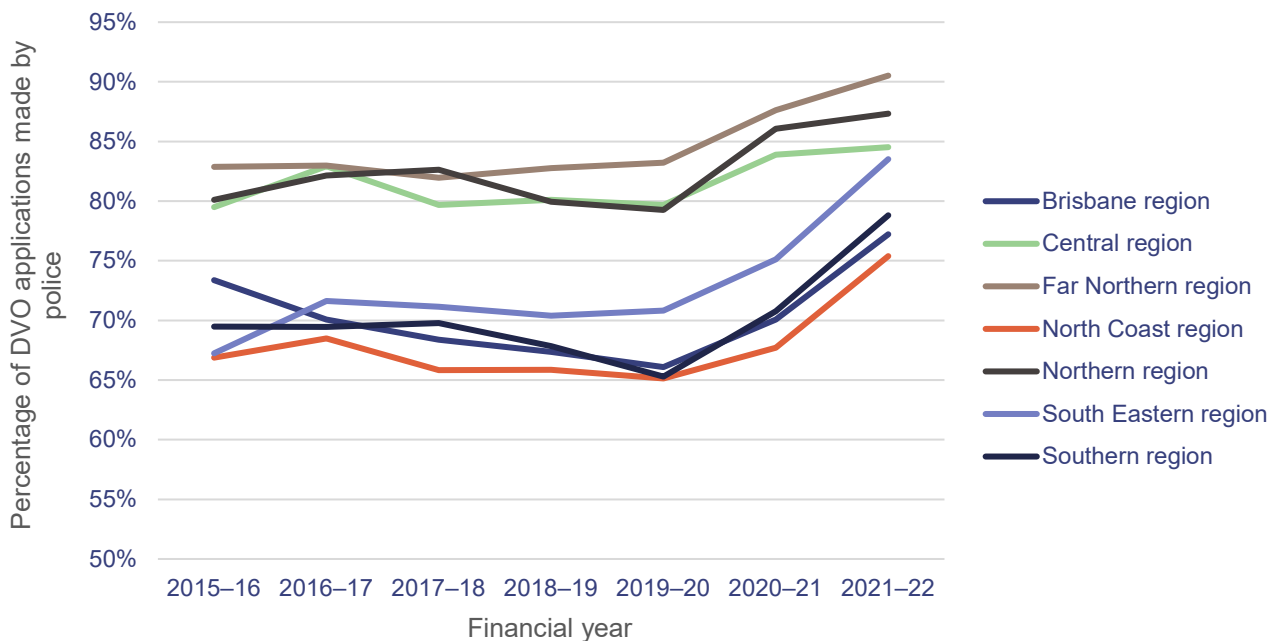


**Figure C6**  
**Domestic violence order breach occurrences that were unfounded, cancelled, or withdrawn – by Queensland Police Service region**



Source: Queensland Audit Office using QPRIME data provided by the Queensland Police Service.

**Figure C7**  
**Percentage of domestic violence order application occurrences that are police applications – by Queensland Police Service region**



Source: Queensland Audit Office using QPRIME data provided by the Queensland Police Service.

